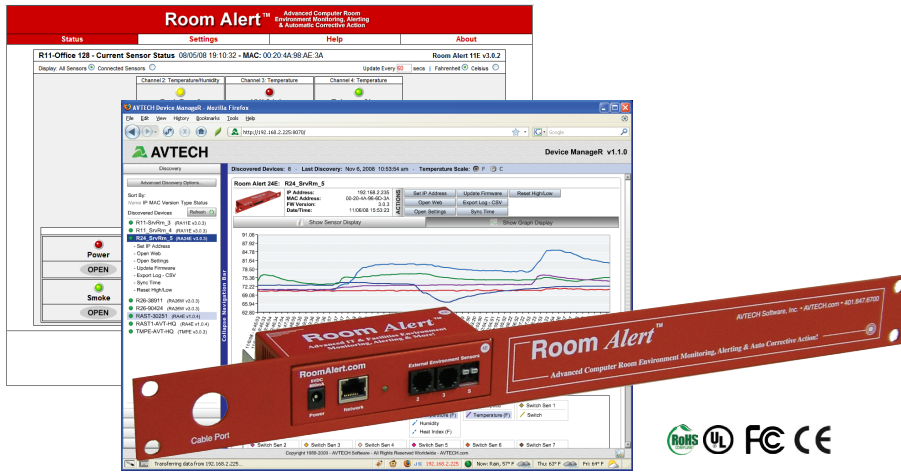


# Room Alert® 4E

“Advanced Physical Environment Monitoring,  
Alerting & Automatic Corrective Action”



Starting At...

**\$355**

RA4E-ES1-BAS (Standard \$355)  
RA4E-ES1-RAS (Rack \$385)

## Broad Features, Extreme Reliability & Light Tower Ready

- Easy Ethernet ‘Plug & Play’ setup for immediate IT & facilities environment monitoring.
- Includes a built-in Digital Temperature sensor, Device Manager software & “PUSH” technology.
- Includes an external Digital Temperature Sensor.
- Includes ports for 2 digital sensors, 1 switch sensor or dry contact and an External Light Tower or Light Tower w/Audio.
- Offers advanced alerting by email, email-to-SMS, SNMP, webpage update and more.
- Use Room Alert 4E’s built-in web server, Device Manager software (included FREE) or any SNMP application to monitor unlimited units across your network.
- The Room Alert 4E package allows real-time sensor status, data logging, graphing, advanced alerting, Fahrenheit/Celsius, high/low watermarks and much more.
- Add a ‘Plugin Bundle’ to Device Manager to enhance the capabilities of the Room Alert 4E. Available plugins allow users to Shutdown or Reboot Windows systems, Log Off users and/or Run Scripts/Commands, alert via Dial Out actions and more, remotely across the network.
- Use Room Alert 4E with or without a host system. That’s right... No PC Required! This saves money, improves reliability and provides options. Install in minutes today, enjoy ‘Peace Of Mind’ tonight!

**5 Steps To Prevent EM Disaster**  
1) Install Monitors for Immediate Detection  
2) Auto Alerting to Responsible IT Staff  
3) Auto Shutdown & Action Procedures  
4) Fast & Appropriate Response by Staff  
5) Review/Analyze/Plan Future Prevention

Manufacturer: AVTECH Software inc.

AVT 130401.02

INCLUDES: Room Alert 4E, built-in Digital Temperature Sensor, external Digital Temperature Sensor, 2 Digital Sensor Ports (RJ-11), 1 Switch Sensor Channel, PUSH technology, Ethernet Connection (RJ-45), Light Tower Expansion Port, 10’ Ethernet cable, 5V Power Adapter (110/240V, RoHS), built-in web server, SNMP Trap & Query enabled, SNMP Mib, bundled Device Manager software license, installation & resource media, printed *Room Alert 4E User’s Guide & Reference Manual*, 12 months of *Maintenance Support & Update Service (MSUS)*, ‘30-Day Satisfaction Guarantee’ and special offers on other products. Optional rack mount bracket, sensors Light Tower or Relay Switch Sensor, voice or GSM modem & software plugin packages available.