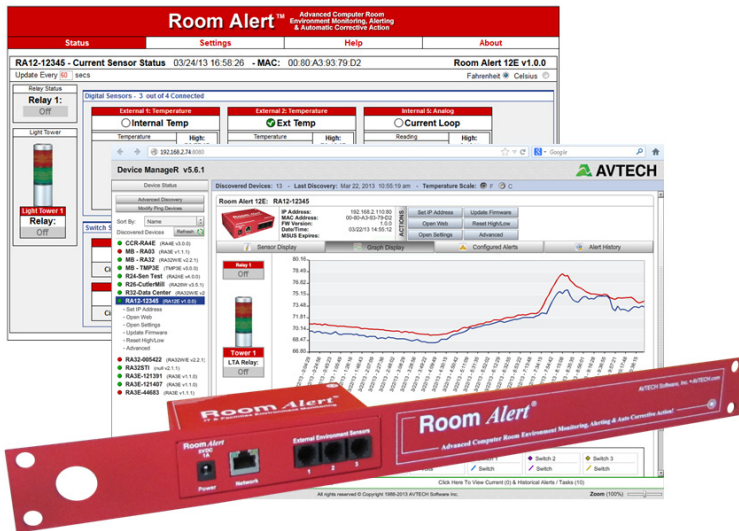


Room Alert® 12E



“Advanced Physical Environment Monitoring,
Alerting & Automatic Corrective Action”



Starting At...

\$545

RA12E-TH1-BAS (Standard \$545)
RA12E-TH1-RAS (Rack \$565)



Advanced Features, Midrange Capacity & Midrange Price

- Easy Ethernet ‘Plug & Play’ setup for immediate IT & facilities environment monitoring.
- Includes built-in sensors for digital temperature, Device Manager software, SNMP Mib and “PUSH” technology.
- Includes Power Over Ethernet (PoE), an external Digital Temperature Sensor and external Power Sensor.
- Includes ports for 3 digital sensors and 4 switch sensors or dry contacts, as well as additional ports to connect a 0-5V analog sensor, low voltage relay, and Light Tower & Relay Adapter (LTA).
- Offers advanced alerting by email, email-to-SMS, SNMP, webpage update and more.
- Use Room Alert 12E’s built-in web server, Device Manager software (*included FREE*) or any SNMP application to monitor unlimited monitors across your network.
- The Room Alert 12E package allows real-time sensor status, data logging, graphing, advanced alerting, Fahrenheit/Celsius, high/low watermarks and much more.
- Use Room Alert 12E with or without a host system. That’s right... No PC Required! This saves money, improves reliability and provides users with options.
- Install in minutes today, enjoy ‘Peace Of Mind’ tonight!

5 Steps To Prevent EM Disaster

- 1) Install Monitors for Immediate Detection
- 2) Auto Alerting to Responsible IT Staff
- 3) Auto Shutdown & Action Procedures
- 4) Fast & Appropriate Response by Staff
- 5) Review/Analyze/Plan Future Prevention

Manufacturer: AVTECH Software inc.

AVT 130401.02

INCLUDES: Room Alert 12E monitor, built-in Digital Temperature Sensor, external Digital Temperature Sensor, external Power Sensor, 3 Digital Sensor Ports (RJ-11), 4 Switch Sensor Channels, Factory Reset Button, Power Over Ethernet (PoE), PUSH technology, Ethernet Connection (RJ-45), Light Tower & Relay Adapter Connection Port (the LTA allows connection of a Light Tower or Relay Switch Sensor), Relay Output Port (0.3A@125VAC / 1A@24VDC), 0-5V Analog Sensor Input Port, 10’ Ethernet cable, 5V 1A Power Adapter (110/240V, RoHS), built-in web server, SNMP Trap & Query enabled, SNMP Mib, bundled Device Manager software license, printed *Room Alert 12E User’s Guide & Reference Manual*, 12 months of *Maintenance Support & Update Service (MSUS)*, ‘30-Day Satisfaction Guarantee’ and special offers on other products. Optional rack mount bracket, sensors, Light Tower & Relay Adapter (LTA), voice or GSM modem & software plugin packages available.